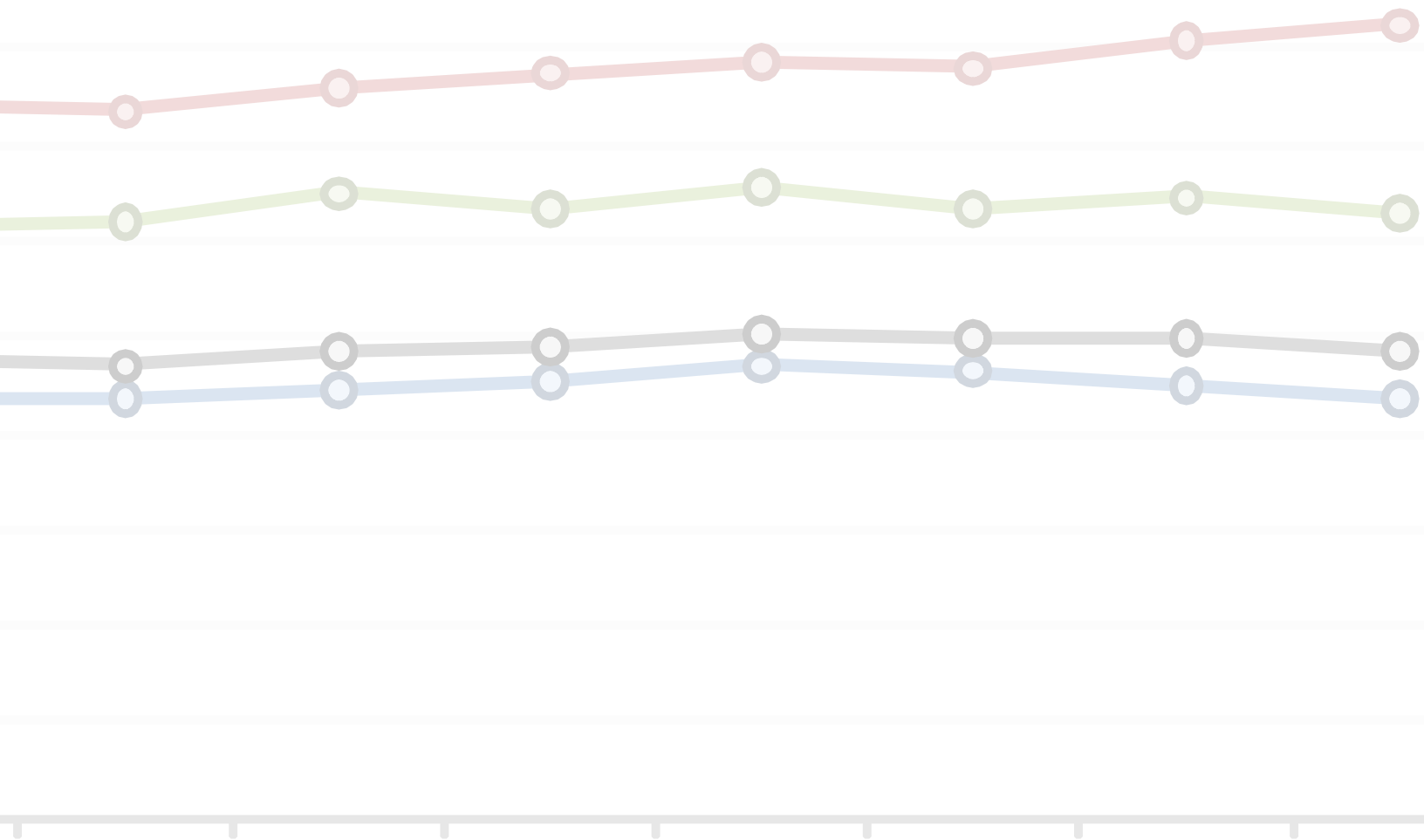




MARCH 2010

RACE-RECOVERY INDEX

IS STIMULUS HELPING COMMUNITIES IN CRISIS?



KIRWAN INSTITUTE

FOR THE STUDY OF RACE AND ETHNICITY

THE OHIO STATE UNIVERSITY

john a. powell
Executive Director

Andrew Grant-Thomas
Deputy Director

RACE-RECOVERY INDEX

The Race-Recovery Index, a project of the Kirwan Institute, is designed to measure how all people, but particularly marginalized populations, are faring in the midst of the national recovery efforts. The two primary tools for measurement that will be used on a monthly basis will be the national unemployment figures by race, and the Federal contract procurement of the American Recovery and Reinvestment Act of 2009 (ARRA). Additional forms of measurement may eventually be added. As new information becomes available, the Index will be updated accordingly and will include commentary about trends in the findings.

For more information, please visit:

www.fairrecovery.org

FairRecovery.org

STAFF CONTRIBUTORS

Matthew Martin, *GIS/Planning Specialist*

Jason Reece, *Senior Researcher*



NATIONAL UNEMPLOYMENT

The overall National unemployment rate remained the same (9.7) from January to February of 2010. Within this maintained rate, however, there were some developments in terms of a few particular demographics. For instance, the unemployment rate of Whites increased a tenth of a percentage point, which was fueled largely by the half-percentage increase in the unemployment rate of White women. On the other hand, despite an overall decrease in unemployment among Blacks, the unemployment rate among Black men increased two-tenths of a percentage point. Most other demographic groups (White men, Black Women, Latinos, youths) experienced at least a slight decline over the previous month.¹

Table 1. Feb. 2009- Feb. 2010 Unemployment Totals by Race (in thousands)

Race	Feb-09	Mar-09	Apr-09	May-09	Jun-09	Jul-09	Aug-09	Sep-09	Oct-09	Nov-09	Dec-09	Jan-10	Feb-10	% Change (year over year)
White	9,408	9,996	10,213	10,874	10,986	10,927	11,254	11,366	11,813	11,589	11,266	10,782	10,982	16.7%
Black	2,396	2,367	2,676	2,650	2,617	2,600	2,682	2,701	2,754	2,757	2,843	2,929	2,812	17.4%
Latino	2,433	2,571	2,548	2,860	2,739	2,792	2,908	2,849	2,939	2,872	2,891	2,848	2,800	15.1%
Total	12,714	13,310	13,816	14,518	14,721	14,534	14,993	15,159	15,612	15,340	15,267	14,837	14,871	17.0%

Source: U.S. Bureau of Labor Statistics, <http://www.bls.gov/news.release/empisit.toc.htm>

Table 2. Feb. 2009- Feb. 2010 Unemployment Rates by Race

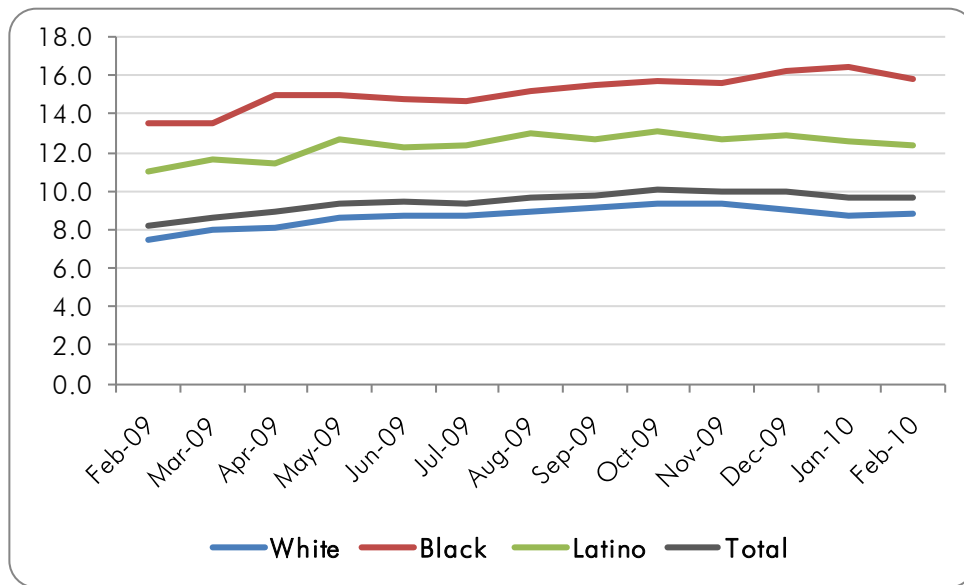
Race	Feb-09	Mar-09	Apr-09	May-09	Jun-09	Jul-09	Aug-09	Sep-09	Oct-09	Nov-09	Dec-09	Jan-10	Feb-10
White	7.5	8.0	8.1	8.6	8.7	8.7	8.9	9.1	9.4	9.3	9.0	8.7	8.8
Black	13.5	13.5	15.0	15.0	14.8	14.7	15.2	15.5	15.7	15.6	16.2	16.5	15.8
Latino	11.0	11.6	11.4	12.7	12.3	12.4	13.0	12.7	13.1	12.7	12.9	12.6	12.4
Total	8.2	8.6	8.9	9.4	9.5	9.4	9.7	9.8	10.1	10	10	9.7	9.7

Source: U.S. Bureau of Labor Statistics, <http://www.bls.gov/news.release/empisit.toc.htm>

¹ U.S. Bureau of Labor Statistics, Economic News Release: March 5, 2010 Employment Situation.
<http://www.bls.gov/news.release/empisit.toc.htm>

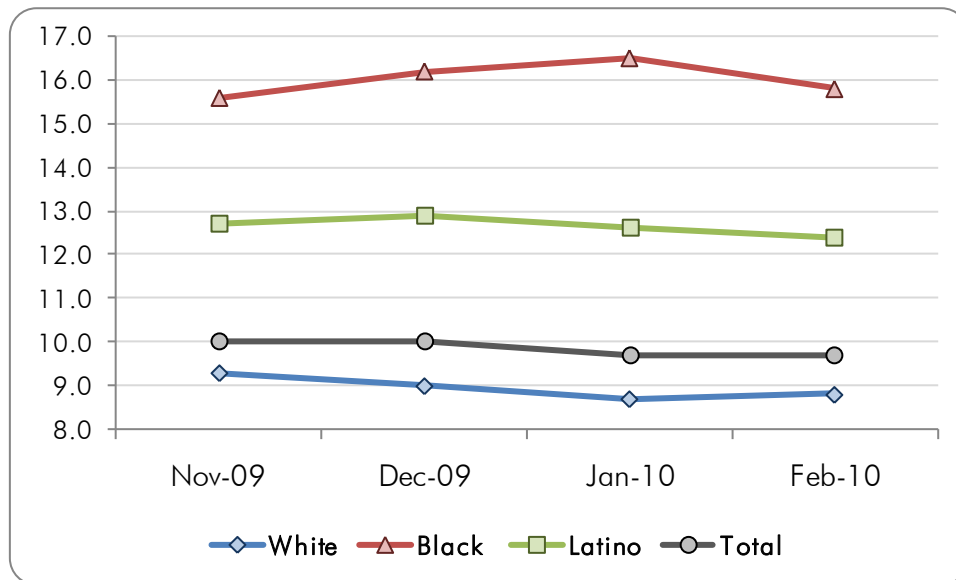


Chart 1. Feb. 2009- Feb. 2010 Unemployment Rates by Race



Source: U.S. Bureau of Labor Statistics, <http://www.bls.gov/news.release/empsit.toc.htm>

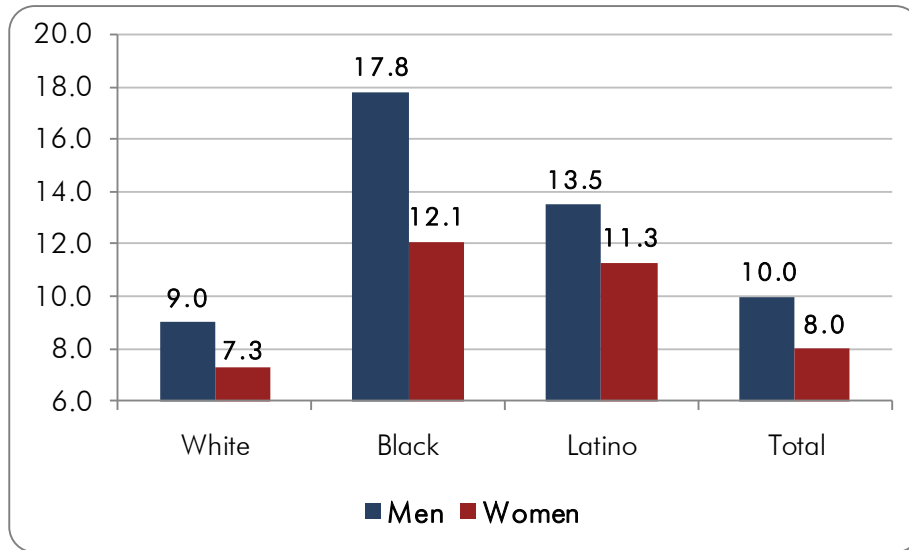
Chart 2. Recent Unemployment Trends, by Race



Source: U.S. Bureau of Labor Statistics, <http://www.bls.gov/news.release/empsit.toc.htm>



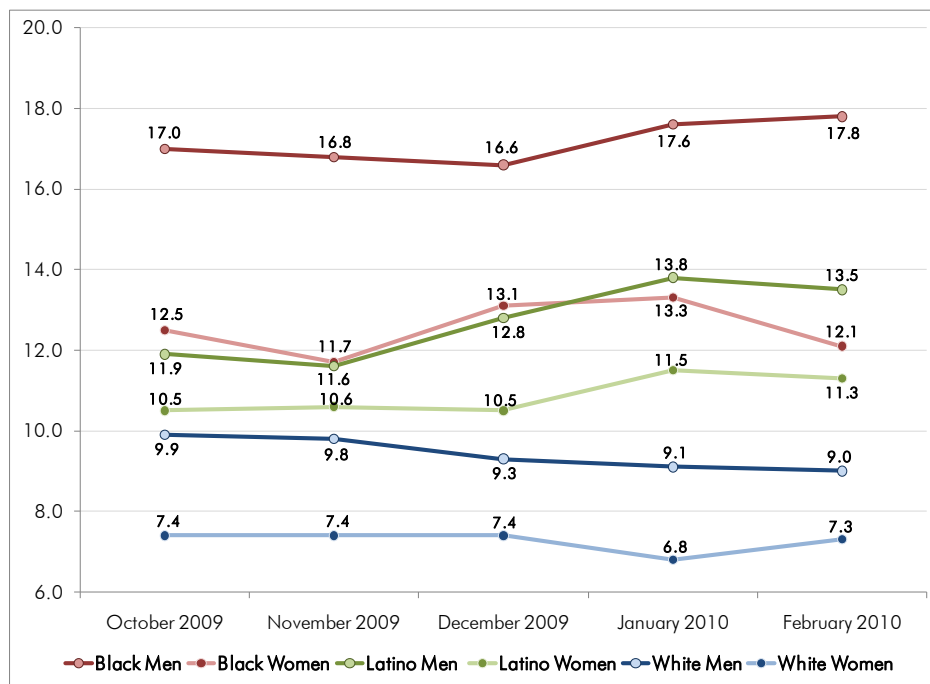
Chart 3. February 2010 Unemployment Rates by Race and Gender



Source: U.S. Bureau of Labor Statistics, <http://www.bls.gov/news.release/empsit.toc.htm>

An increase in unemployment among the top (Black men) and bottom (White women) of the spectrum may represent the scope of the recession as it continues, showing that the economic pain is being felt across the country and across industries and sectors, hitting communities of color the hardest.

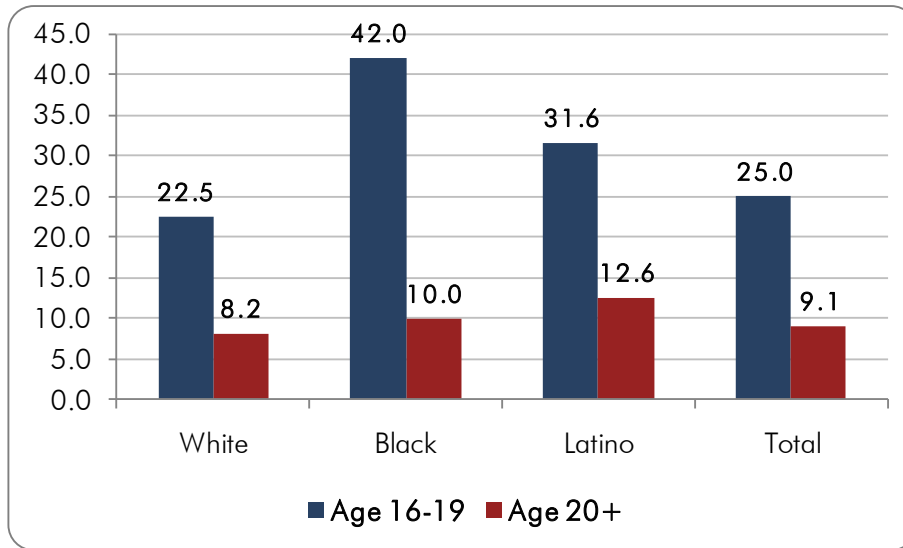
Chart 4. Unemployment Rates by Race and Gender



Source: U.S. Bureau of Labor Statistics, <http://www.bls.gov/news.release/empsit.toc.htm>



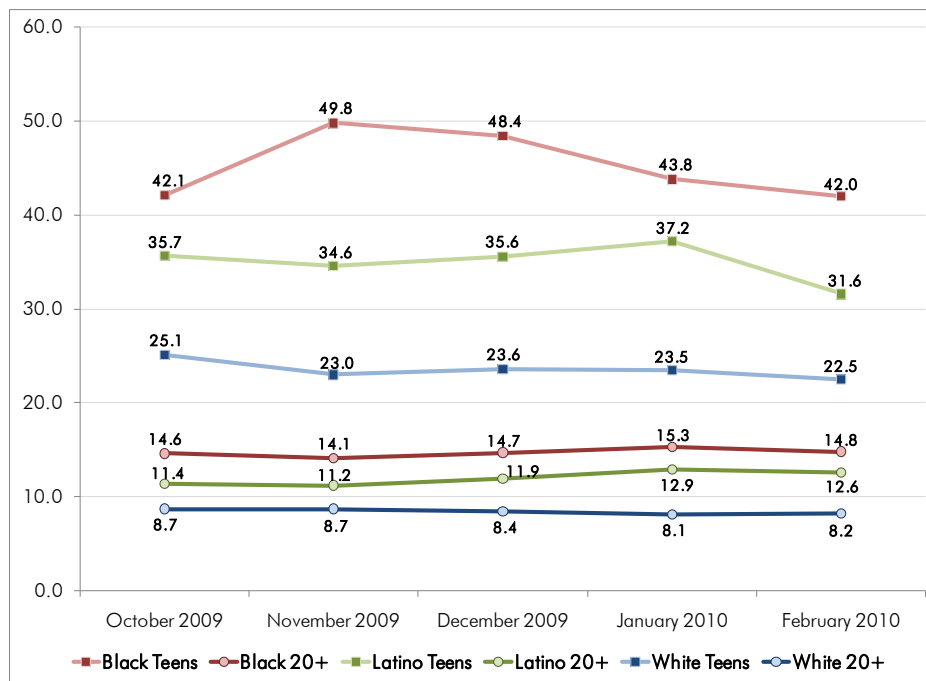
Chart 5. February 2010 Unemployment Rates by Race and Age



Source: U.S. Bureau of Labor Statistics, <http://www.bls.gov/news.release/empsit.toc.htm>

These charts show how the disparity that exists between races is even greater among teenagers. Even despite modest decline in the unemployment rates of Black and Latino youth, a large gap persists between Whites and non-Whites.

Chart 6. Unemployment Rates by Race and Age



Source: U.S. Bureau of Labor Statistics, <http://www.bls.gov/news.release/empsit.toc.htm>



FEDERAL ARRA CONTRACT PROCUREMENT

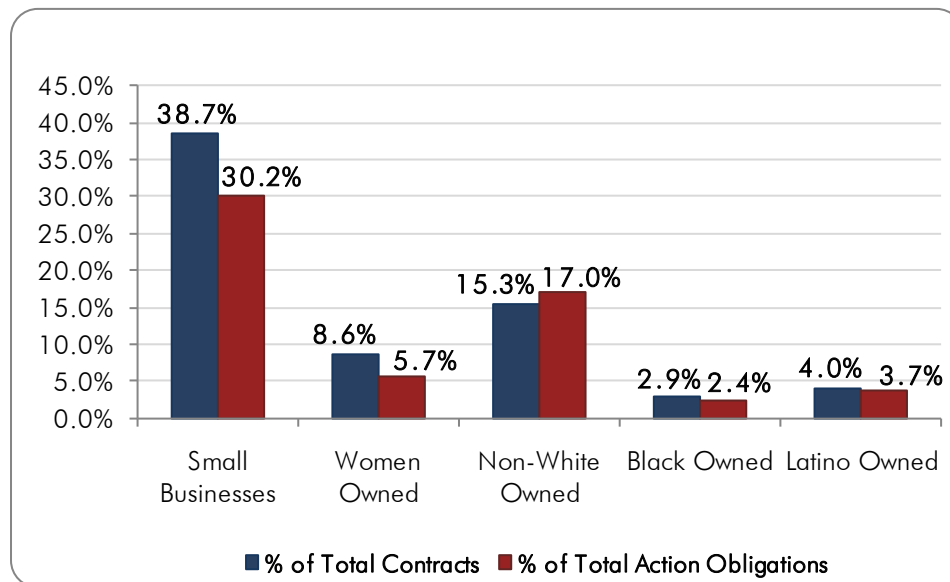
Contracting figures from the Federal Procurement Data System continue to show that firms owned by minorities and disadvantaged business owners² are receiving disproportionately small shares of Federal Recovery contracts, and even smaller shares of contract pay-out value.³ This is a trend which has become increasingly disparate as the Recovery has unfolded, potentially signaling a diminishing sense of accountability regarding equity.

Table 3. Federal ARRA Contract Procurement as of March 5, 2010

Business Owner	Contracts	% of Total Contracts	Action Obligations Amount	% of Total Action Obligations
Small Businesses	13,724	38.7%	\$6,452,057,418	30.2%
Women Owned	3,036	8.6%	\$1,225,789,112	5.7%
Non-White Owned	5,439	15.3%	\$3,627,972,395	17.0%
Black Owned	1,014	2.9%	\$508,132,027	2.4%
Latino Owned	1,424	4.0%	\$790,644,227	3.7%
Total Federal ARRA Contracts	35,475	-	\$21,360,632,586	-

Source: www.fpds.gov, Recovery Report, 3/5/2010

Chart 7. Federal ARRA Contract Procurement as of March 5, 2010



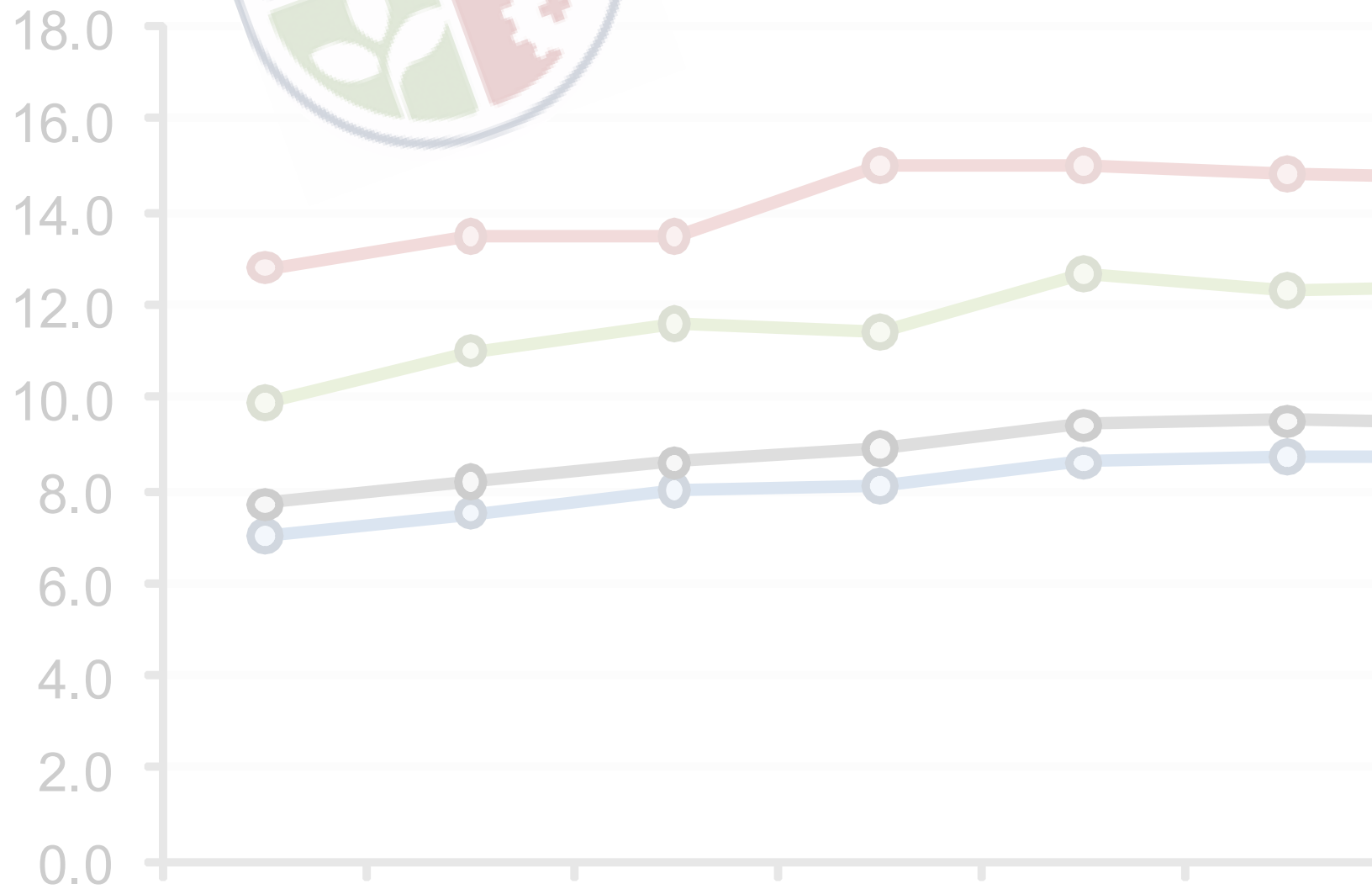
Source: www.fpds.gov, Recovery Report, 3/5/2010

² Women-owned, Latino-owned, and Black-owned businesses account for 28.2%, 6.8%, and 5.2% of all U.S. businesses respectively, according to the US Census Bureau, 2002 Economic Census Survey of Business Owners

³ Per Federal Procurement Data System representative, "Action Obligations" represent the value of contracted work elements to date.

KIRWAN INSTITUTE

The Kirwan Institute for the Study of Race and Ethnicity is a university-wide interdisciplinary research institute. We generate and support innovative analyses that improve understanding of the dynamics that underlie racial marginality and undermine full and fair democratic practices throughout Ohio, the United States, and the global community. Responsive to real-world needs, our work informs policies and practices that produce equitable changes in those dynamics.



KIRWAN INSTITUTE FOR THE STUDY OF RACE AND ETHNICITY

THE OHIO STATE UNIVERSITY

433 MENDENHALL LABORATORY | 125 SOUTH OVAL MALL | COLUMBUS OH 43210

Ph: 614.688.5429 | Fax: 614.688.5592

Website: www.kirwaninstitute.org